

Miniature Power Relays Series Elesta

Type SVR 452

Monostable



- Miniature size 15.5 mm
- PCB mounting
- 5 kV / 8 mm insulation
- Switching capability 8 A / 250 VAC
- General purpose, industrial electronics
- Sealed according IP 67
- 2 different pin layout
- Low coil power consumption

Product Description

SVR heavy-duty printrelays provide new dimensions of performance. Highest sensitivity and minimal self-heating. The coil wound over the entire length of the relay provides favourable field proportions.

Approvals



Ordering key

SVR 452 24 V.. Au

Type
SVR 452

Rated voltage
5, 6, 12, 24, 48 VDC

Coil rated voltage
VDC = Direct voltage

Options
contact materials:
AgCdO+Au 4-6 µm

Type Selection

Contact configuration

Contact rating

Contact code

1 change over contact (SPDT-1d {1-form C})

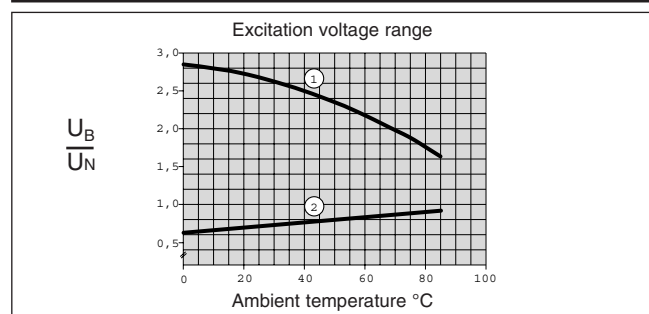
8 A

452

Coil Characteristics, CC (20°C)

Rated voltage VDC	Min pick-up voltage VDC	Drop-out voltage VDC	Nominal current mA	Winding resistance	
				Ω	Tolerance %
5.0	3.5	≥0.25	45.5	110	+/-10
6.0	4.2	≥0.3	34.2	175	+/-10
12.0	8.4	≥0.6	16.2	660	+/-10
24.0	16.8	≥1.2	8.42	2850	+/-15
48.0	33.6	≥2.4	4.80	10000	+/-15

Temperature Influence



- no accumulation on PCB by self heating from other components
- continuous duty 100%

- 1) max excitation voltage without contact load
- 2) min excitation voltage (guaranteed values) without previous operation

Contact Characteristics

Rating	8 A
Material (standard version) ¹⁾	Ag CdO
Current (for AC) Rated current Max. inrush current Switching current range	8 A 30 A per 20 ms 50 mA ÷ 8 A
Voltage Rated voltage Max switching voltage	250 VAC - 50 Hz 250 VAC 8A AC1, 2000VA 440 VAC 4A AC1, 1600VA
Max switching power (guide values)	0.25 VA(W) ÷ 2000 VA
Life Electric life 250 VAC, 8 A, AC1 Mechan. life	about 200.000 cycles 360 cycles/h > 30 x 10⁶ cycles

Insulation

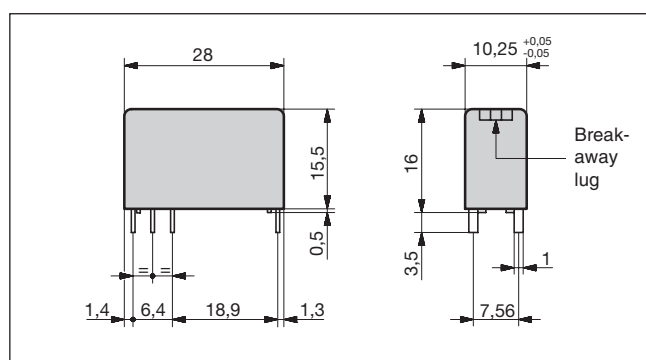
Insulation resistance	10⁶ MΩ
Test voltage (1 min.) Open contact Coil/contact	1000 VAC 5000 VAC
Insulation group	VDE 0110 group C/250 VAC

¹⁾ Other materials available on request

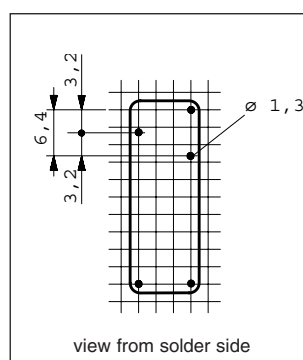
General Data

Operating time (typical value)	≤ 7 ms
Release time (typical value)	≤ 1,5 ms
Release bounce time (typical value) contact NO contact NC	≤ 1 ms ≤ 2,5 ms
Switc. frequency, mech.	20 Hz
Test voltage coil/contact	4250 Veff.
Test voltage open contact	1000 Veff.
Ambient temperature	- 40 °C ÷ +85 °C
Vibration resistance	> 50 g
Inside protection (IEC529)	IP 67, DIN 40050
Weight	10 g
Tracking, air distances	> 8 mmVDE 0631 / 0730 CENELEC EN 50020
Protection class II	VDE 0106
Flamability	UL 94 / V0
Wash proof	IEC 68, part 2-17, Qc2 (70 °C /1 min)
Rules in power installations	VDE 0435 / 9.72
Temperature controllers and limitation	VDE 0631
Use in household appliances	VDE 0700, VDE 0730
Safe separation of telecom. and power installations	VDE 0804
Standard for industrial controls	UL 508
Standard tests	DIN IEC 255
Tracking resistance of basic body	CTI 250 (DIN CEI 112)

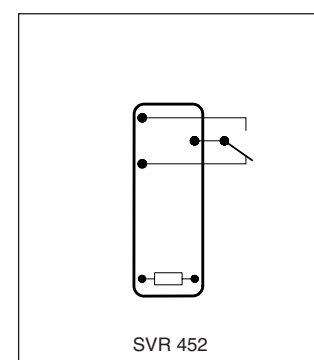
Dimensions



Pin View



Wiring Diagram



Miniature Power Relays Series Elesta

Type SVR 762, 742

Monostable



- Miniature size 15.5 mm
- PCB mounting
- 5 kV / 8 mm insulation
- Switching capability 8 A / 250 VAC
- General purpose, industrial electronics
- Sealed according IP 67
- 2 different pin layout
- Low coil power consumption

Product Description

SVR heavy-duty printrelays provide new dimensions of performance. Highest sensitivity and minimal self-heating. The coil wound over the entire length of the relay provides favourable field proportions.

Approvals



Ordering key

SVR 762 . 24 V.. Au

Type
SVR 762, 742

Rated voltage
5, 6, 12, 24, 48 VDC

Coil rated voltage
VDC = Direct voltage

Options
contact materials
AgCdO+Au 4-6 μm

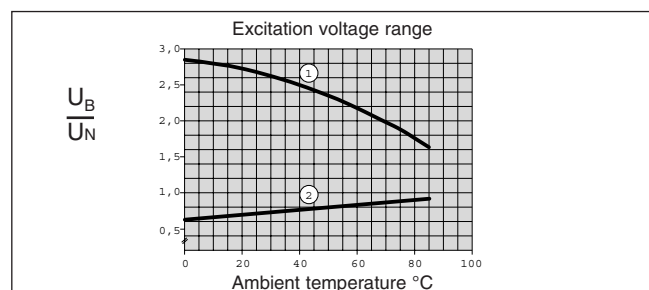
Type selection

Contact configuration	Contact rating	Contact code
1 normally open contact SPST-NA {1-form A}}	8 A	742
1 change over contact (SPDT-1d {1-form C})	8 A	762

Coil Characteristics, CC (20°C)

Rated voltage VDC	Min pick-up voltage VDC	Drop-out voltage VDC	Nominal current mA	Winding resistance	
				Ω	Tolerance %
5.0	3.5	≥0.25	45.5	110	+/-10
6.0	4.2	≥0.3	34.2	175	+/-10
12.0	8.4	≥0.6	16.2	740	+/-10
24.0	16.8	≥1.2	8.42	2850	+/-15
48.0	33.6	≥2.4	4.80	10000	+/-15

Temperature Influence



- no accumulation on PCB by self heating from other components
- continuous duty 100%
- 1) max excitation voltage without contact load
- 2) min excitation voltage (guaranteed values) without previous operation

Contact Characteristics

Rating	8 A
Material (standard version) ¹⁾	Ag CdO
Current (for AC)	
Rated current	8 A
Max. inrush current	30 A per 20 ms
Switching current range	50 mA ÷ 8 A
Voltage	
Rated voltage	250 VAC - 50 Hz
Max switching voltage	250 VAC 8A AC1, 2000VA 440 VAC 4A AC1, 1600VA
Max switching power (guide values)	0.25 VA(W) ÷ 2000 VA
Life	
Electric life	about 200.000 cycles
250 VAC, 8 A, AC1	360 cycles/h
Mechan. life	> 30 x 10 ⁶ cycles
Contact resistance	20 mΩ

Insulation

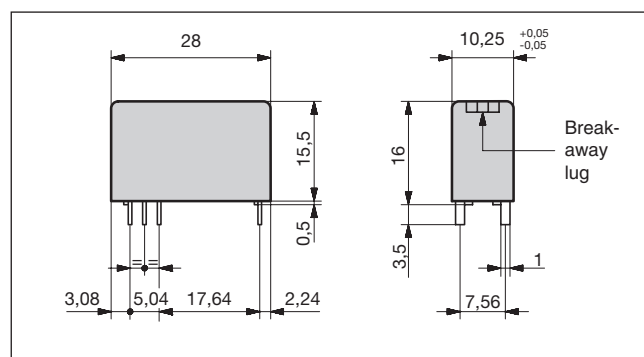
Insulation resistance	10 ⁶ MΩ
Test voltage (1 min.)	
Open contact	1000 VAC
Coil/contact	5000 VAC
Insulation group	VDE 0110 group C/250 VAC

¹⁾ Other materials available on request

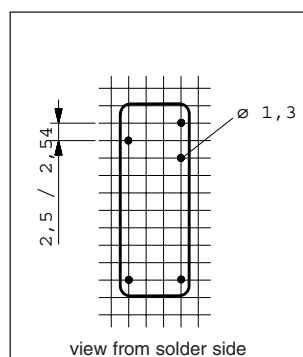
General Data

Operating time (typical value)	≤ 7 ms
Release time (typical value)	≤ 1,5 ms
Release bounce time (typical value) contact NO contact NC	≤ 1 ms ≤ 2,5 ms
Switc. frequency, mech.	20 Hz
Test voltage coil/contact	4250 Veff.
Test voltage open contact	1000 Veff.
Ambient temperature	- 40 °C ÷ +85 °C
Vibration resistance	> 50 g
Inside protection (IEC529)	IP 67, DIN 40050
Weight	10 g
Tracking, air distances	> 8 mmVDE 0631 / 0730 CENELEC EN 50020
Protection class II	VDE 0106
Flamability	UL 94 / V0
Wash proof	IEC 68, part 2-17, Qc2 (70 °C / 1 min)
Rules in power installations	VDE 0435 / 9.72
Temperature controllers and limitation	VDE 0631
Use in household appliances	VDE 0700, VDE 0730
Safe separation of telecom. and power installations	VDE 0804
Standard for industrial controls	UL 508
Standard tests	DIN IEC 255
Tracking resistance of basic body	CTI 250 (DIN CEI 112)

Dimensions



Pin View



Wiring Diagrams

